



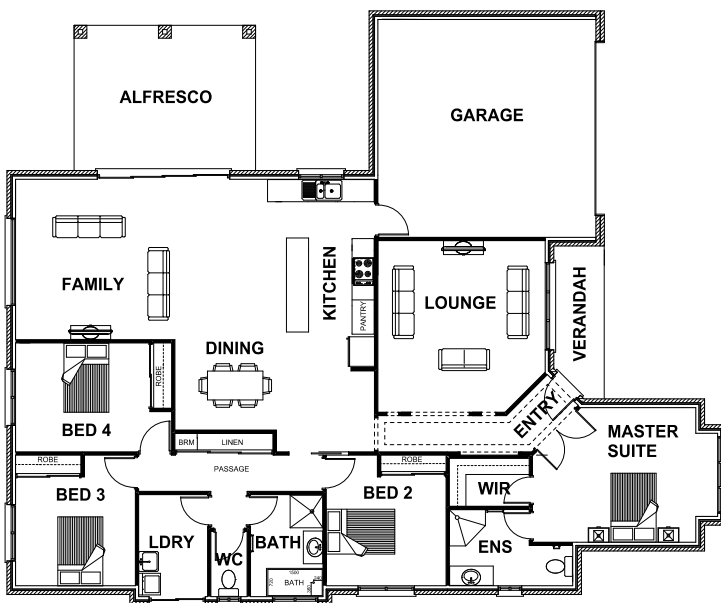
HARRINGTON HOMES

"love your lifestyle"



BRIGHTON 27

 4
  2
  2
  3



ROOM DIMENSIONS

Family	4.39m x 4.42m
Dining	5.50m x 2.49m
Lounge	4.61m x 4.45m
Kitchen	2.40m x 3.50m
Master Suite	5.10m x 3.71m
Bedroom 2	3.30m x 3.60m
Bedroom 3	3.30m x 3.60m
Bedroom 4	4.30m x 3.00m
Garage	6.01m x 6.00m

HOUSE DIMENSIONS

House Area	20.16 squares
Garage Area	4.35 squares
Alfresco Area	2.15 squares
Total Area	27.16 squares
Total Length	19.82m
Total Width	16.38m
Min Block Width	17.58m

*Subject to orientation and fall of land and developer and council guidelines. Classic floorplan shown.

Brochure is for marketing purposes only. - Plans and specifications are subject to change without notice. - Colours, furniture layouts, materials, finishes & landscape design are for impression purposes only. - Plans and impressions not to scale. - Plans subject to copyright

www.harringtonhomes.com.au

Harrington Homes Pty Ltd CBD-U 52666

DISPLAY CENTRE

121a Firebrace Street
 Horsham Vic 3400
 Phone: 5382 4400
info@harringtonhomes.com.au