



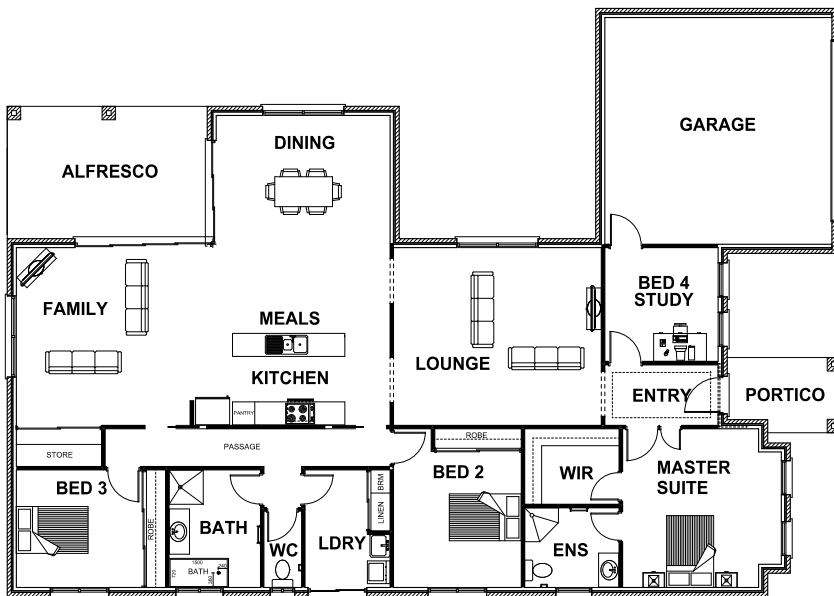
HARRINGTON HOMES

"love your lifestyle"



BRADBROOKE 29

4
 2
 2
 3



ROOM DIMENSIONS

Family	5.29m x 4.70m
Dining	4.60m x 3.26m
Lounge	5.20m x 4.70m
Kitchen	3.40m x 2.40m
Master Suite	4.20m x 4.20m
Bedroom 2	3.38m x 4.20m
Bedroom 3	3.95m x 3.11m
Bedroom 4	3.00m x 3.01m
Garage	6.01m x 6.00m

HOUSE DIMENSIONS

House Area	22.04 squares
Garage Area	4.43 squares
Alfresco Area	1.99 squares
Portico Area	0.47 squares
Total Area	28.93 squares
Total Length	22.05m
Total Width	15.56m
Min Block Width	16.76m

*Subject to orientation and fall of land and developer and council guidelines. Classic floorplan shown.

Brochure is for marketing purposes only. - Plans and specifications are subject to change without notice. - Colours, furniture layouts, materials, finishes & landscape design are for impression purposes only. - Plans and impressions not to scale. - Plans subject to copyright

www.harringtonhomes.com.au

Harrington Homes Pty Ltd CBD-U 52666

DISPLAY CENTRE

121a Firebrace Street
 Horsham Vic 3400
 Phone: 5382 4400
info@harringtonhomes.com.au